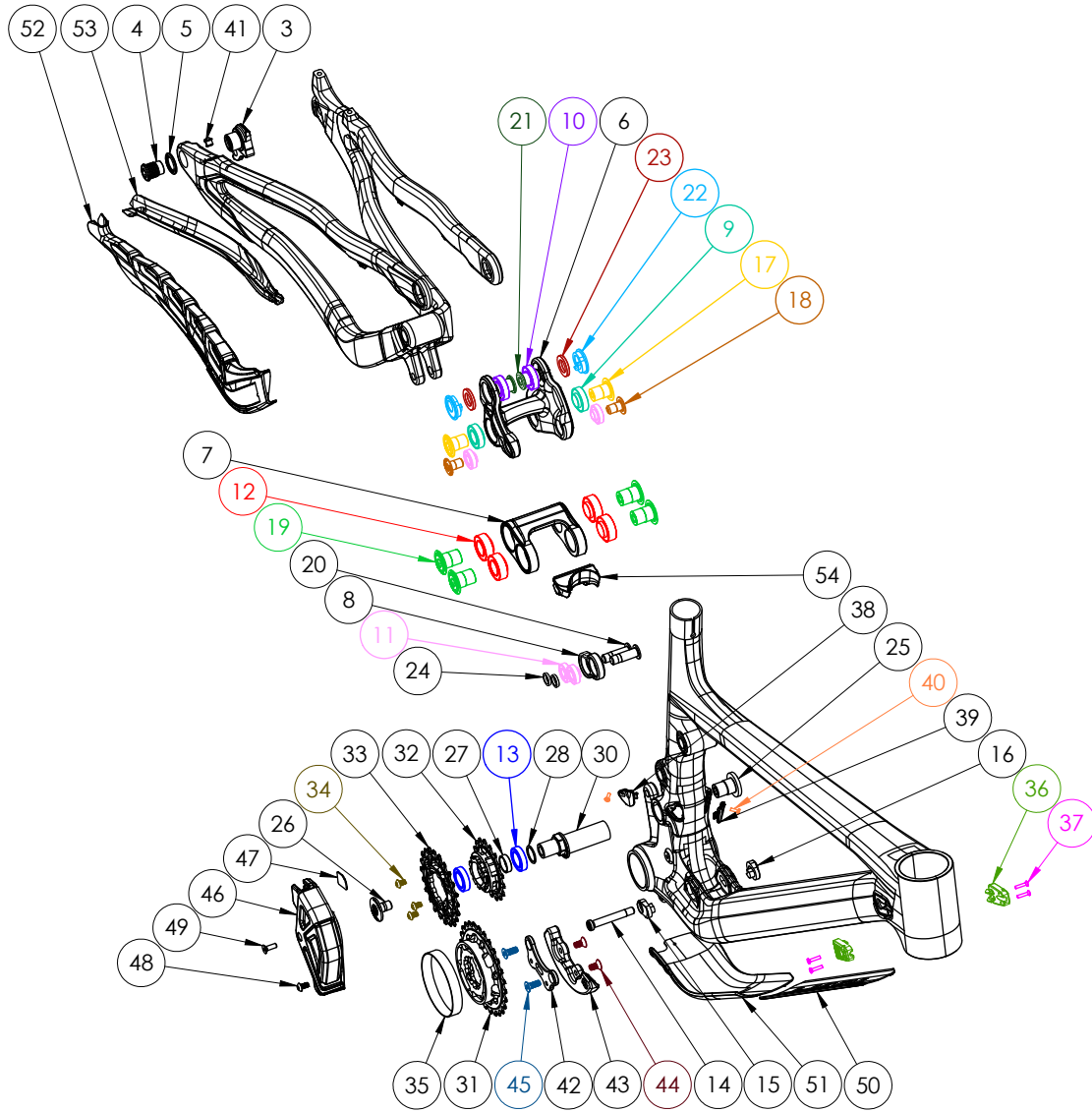


PHOENIX



BIKE CARE	PRODUCT TYPE	RECOMMENDED PRODUCT
*	GREASE	MOTOREX BIKE GREASE 2000
L	THREAD LOCKER**	LOCTITE THREAD LOCKER #243 (OR EQUIVALENT)
G/L	GREASE (BOLT SHAFT) / THREAD LOCKER (BOLT THREADS)	SEE ABOVE
A	ANTI-SEIZE	MOTOREX COPPER PASTE
Y	LIGHT DUTY THREAD LOCKER	LOCTITE THREAD LOCKER #222 (OR EQUIVALENT)
R	RETAINING COMPOUND	LOCTITE RETAINING COMPOUND #620 (OR EQUIVALENT)

HARDWARE NUMBER	PART NUMBER	DESCRIPTION	TORQUE	*
3	FP-UDH-TA-12MM-BLK-VI-RI	UNIVERSAL REAR DERAILLEUR HANGER		
4	-	UNIVERSAL REAR DERAILLEUR HANGER BOLT	25 NM (18 LB-FT)	
5	-	UNIVERSAL REAR DERAILLEUR HANGER WASHER		
6	FP-LNK-UL-62.4MM-VI-RI	62.4MM UPPER LINK		
7	FP-LNK-LL-34MM-DW6-VI	34MM LOWER LINK		
8	FP-LNK-ML-24MM-DW6-VI	24MM MINI LINK		
9	FP-BRG-6902-LLUMAXEEN	28MM 6902 EXTENDED MAX-E BEARING		R
10	FP-BRG-6902-LLUMAX	28MM 6902 STANDARD MAX BEARING		R
11	FP-BRG-6900-LLUMAXE	22MM 6900 EXT'D MAX-E BEARING		R
12	FP-BRG-3903-LLUE	30MM 3903 EXT'D LOWER LINK BEARING		R
13	FP-BRG-MRI7287-LLU	28MM IDLER BEARING		R
14	FP-BLT-M8*12-V2-RI	M8 SHOCK BOLT FOR SHOCK TAB FLIP CHIP	13 NM (10 LB-FT)	6/L
15	FP-NUT-FLIPCHIP-8MM-DS-VI-RI	SHOCK TAB FLIP CHIP (DS)		G
16	FP-NUT-FLIPCHIP-8MM-NDS-VI-RI	SHOCK TAB FLIP CHIP (NDS)		G
17	FP-BLT-M14*20-BLK-V2-R2	M14X20 LINK BOLT	35 NM (27 LB-FT)	L
18	FP-BLT-M10*16.5-BLK-VI	MID TRUNNION MOUNT BOLT	13 NM (10 LB-FT)	L
19	FP-BLT-M16*22-BLK-V2-R2	M16X22 LOWER LINK BOLT	35 NM (27 LB-FT)	L
20	FP-BLT-M10*32-VI-RI	M10X32 MINI LINK BOLT	13 NM (10 LB-FT)	L
21	FP-BLT-M14*20-BLK-V3-R2	M14X20 FLIP CHIP BOLT	35 NM (27 LB-FT)	L
22	FP-NUT-FLIPCHIP-4.6MM-VI	4.6MM FLIP CHIP		G
23	FP-WSH-SPC-151*250*3W	M14X3MM FLIP CHIP SPACER		G
24	FP-WSH-SPC-10*3-VI-RI	MINI LINK SPACER		
25	FP-BLT-COMP-M16*22-BLK-VI-RI	M16X22 MID AXLE COMPRESSION BOLT	35 NM (27 LB-FT)	G
26	FP-BLT-M10*16.5-VI-RI	MID-DRIVE AXLE IDLER MOUNTING BOLT	13 NM (10 LB-FT)	L
27	FP-WSH-SPC-17*6-VI-RI	IDLER BEARING SPACER		
28	FP-WSH-171*210*1W	MID DRIVE AXLE WASHER (1MM)		
29	FP-WSH-171*210*0.5W	MID DRIVE AXLE WASHER (0.5MM)		
30	FP-AXLE-MIDDRIVE-VI-RI	MID DRIVE AXLE		
31	DH9-73-165-27PVT	CRANKS & PRIMARY DRIVEN CHAINRING (27T)		
32	SMU-PVT-1722NW	IDLER DRIVEN RING (17T)		
33	-	IDLER DRIVING RING (22 T)		
34	-	IDLER RING MOUNTING BOLTS	8 NM (5.9 LB-FT)	
35	FP-BND-CHNRNG-GRY-VI	27T CHAINRING BAND		
36	FP-PRO-PHXCV2-HT-VI-RI	PHOENIX CARBON HEADTUBE GUARD		
37	FP-SCW-FLT-M3*15	M3X15 HEADTUBE GUARD SCREW (INCLUDED W/ HT GUARD)		
38	FP-CLM-MECH-FRM-VI	INTERNAL ROUTING CABLE CLAMP		
39	FP-CLM-MECH-FRM-V2	INTERNAL ROUTING CABLE CLAMP (MIRRORED)		
40	FP-SCW-FLT-M3*10-BLK	CABLE PORT CLAMP SCREW BLACK		
41	FP-GDE-D12-7*8*5*3.9	7X8MM CABLE GUIDE EXT'D		
42	FP-MNT-BG-VI	BASH GUARD MOUNTING PLATE		
43	FP-SKD-BG-VI	BASH GUARD		
44	FP-SCW-FLT-M6*12-BLK	BASH GUARD ASSEMBLY BOLTS	10 NM (7 LB-FT)	
45	FP-BLT-FLT-M6*16-VI-RI-BLK	BASH GUARD MOUNTING BOLTS	10 NM (7 LB-FT)	
46	FP-CVR-CN-PHXV5-VI-RI	CHAIN COVER		
47	FP-PAD-CHN-GUID-VI-RI	CHAIN COVER PAD		
48	FP-BLT-BTN-M5*10-VI-RI	CHAIN COVER BUTTON MOUNT BOLT	3 NM (2.2 LB-FT)	
49	FP-SCW-FLT-M5*15-BLK	CHAIN COVER FLAT MOUNT BOLT	3 NM (2.2 LB-FT)	
50	FP-PRO-PHXV5-DTU-VI-RI	PHOENIX DW6 DOWNTUBE PROTECTOR UPPER		
51	FP-PRO-PHXV5-DTL-VI-RI	PHOENIX DW6 DOWNTUBE PROTECTOR LOWER		
52	FP-PRO-PHXV5-CS-VI-R3	PHOENIX DW6 CHAINSTAY PROTECTOR		
53	FP-PRO-PHXV5-SS-VI-RI	PHOENIX DW6 SEATSTAY PROTECTOR		
54	FP-PRO-PHXV5-LL-VI-RI	34MM PHOENIX DW6 PROTECTOR		

NOT PICTURED	PART NUMBER	DESCRIPTION	TORQUE	*
-	157MM THROUGH AXLE V5	157MM UDH REAR AXLE	15 NM (11 LB-FT)	G
-	-	12MM AXLE WASHER (INCLUDED W/ AXLE)		G
-	PIVOT SEAT CLAMP BLACK 36.4	PIVOT SEAT CLAMP BLACK 36.4MM		
-	KGNHG601138	SHIMANO II SPD 105 CHAIN - 38 LINK		
-	86-400IS	M30 BB92 BOTTOM BRACKET		
-	PA-BIK-HSK-VI-DH	PHOENIX DH HS ZS56/28.6 ZS56/30		

**THREADLOCKER SHOULD ALWAYS BE APPLIED TO THE CORRESPONDING FEMALE THREADS FOR THE BOLT SPECIFIED

