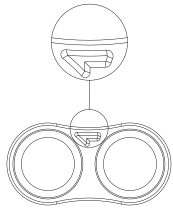
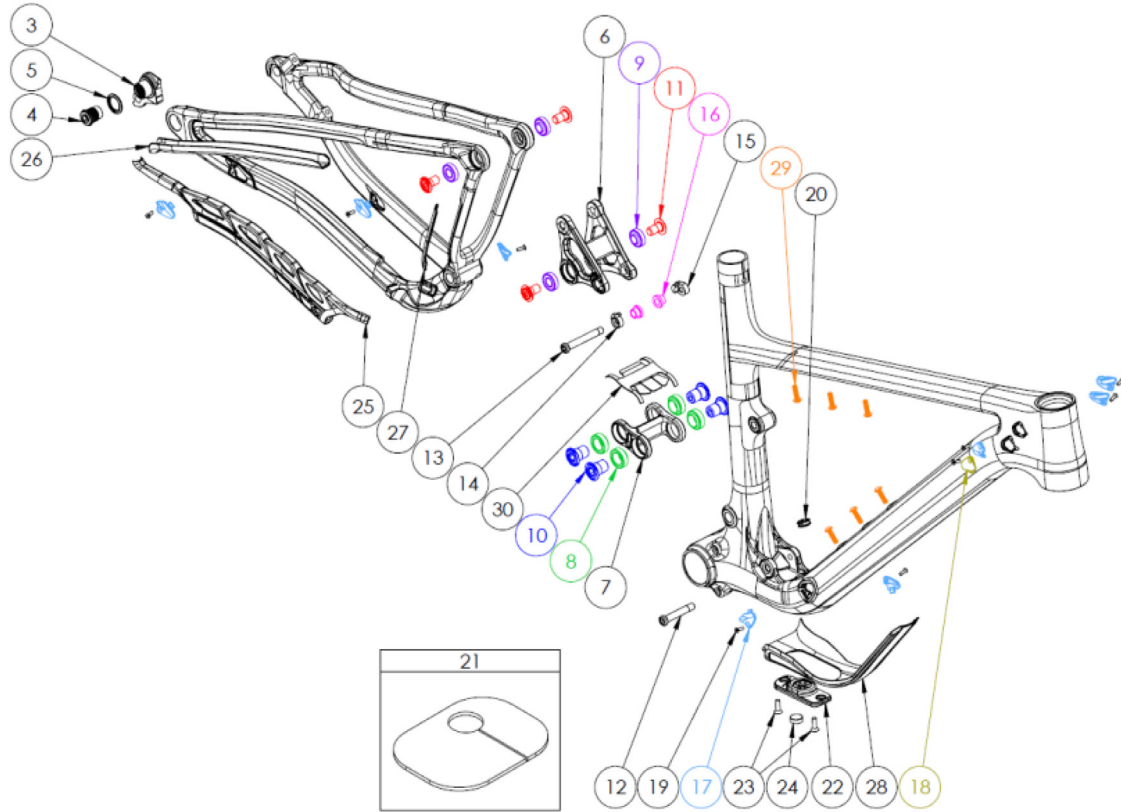


# MACH 4SL



ATTENTION: LOWER LINKS ARE MARKED WITH AN ARROW ON THE NON-DRIVE SIDE. THE LINK MUST BE ORIENTED WHERE THE ARROW POINTS TO THE FRONT TRIANGLE.

HARDWARE NUMBER	PART NUMBER	DESCRIPTION	TORQUE	*
3	FP-UDH-TA-12MM-BLK-VI-RI	UNIVERSAL REAR DERAILLEUR HANGER		
4	-	UNIVERSAL REAR DERAILLEUR HANGER BOLT	25 NM (18 LB-FT)	
5	-	UNIVERSAL REAR DERAILLEUR HANGER WASHER		
6	FP-LNK-UL-66.4MM-VI-RI	66.4MM UPPER LINK		
7	FP-LNK-LL-34MM-VI-RI	34MM OUT-TO-OUT LOWER LINK (3802 BEARINGS)		
8	FP-BRG-3802-LLUMAXEON	24MM 3802 EXTENDED MAX BEARING		R
9	FP-BRG-6900-LLUMAXE	22MM 6900 EXT'D MAX-E BEARING		R
10	FP-BLT-M14*20-VI-R2	M14X20 LINK BOLT FOR 3802 BEARING	35 NM (27 LB-FT)	L
11	FP-BLT-M10*18-BLK-VI-R2	M10X18 LINK BOLT	13 NM (10 LB-FT)	L
12	FP-BLT-M8*45.7-BLK-V2	M8 FRONT SHOCK BOLT FOR 30.1MM SHOCK SPACING	13 NM (10 LB-FT)	G / L
13	FP-BLT-M8*57.3-BLK-VI-RI	M8 SHOCK BOLT FOR UPPER LINK FLIP CHIP		
14	FP-NUT-UL-FLIPCHIP-DS-VI-RI	UPPER LINK FLIP CHIP (DS)		
15	FP-NUT-UL-FLIPCHIP-NDS-VI-RI	UPPER LINK FLIP CHIP (NDS)		
16	FP-SPC-UL-FLIPCHIP-VI-RI	UPPER LINK FLIP CHIP SPACER		
17	FP-CLM-MECH-FRM-VI	INTERNAL ROUTING CABLE CLAMP		
18	FP-CVR-MECH-FRM-V2	INTERNAL ROUTING HOLE COVER		
19	FP-SCW-FLT-M3*10-BLK	CABLE PORT CLAMP SCREW BLACK		
20	FP-PLG-FLV-RL-VI-RI	FOX REMOTE LOCKOUT PLUG		
21	FP-GKT-FOX-REMOTE-VI-RI	FOX REMOTE SHOCK GASKET		
22	FP-MNT-TOOL-BLK-VI-RI	TOPEAK TOOL MOUNT		
23	FP-SCW-FLT-M5*16	MSX16 TOPEAK TOOL MOUNT SCREWS		
24	FP-MNT-TLPLG-BLK-VI-RI	TOPEAK TOOL MOUNT PLUG		
25	FP-PRO-4SLV3-CS-VI-RI	MACH 4 CARBON SL V3 CHAINSTAY PROTECTOR		
26	FP-PRO-4SLV3-SS-VI-RI	MACH 4 CARBON SL V3 SEATSTAY PROTECTOR		
27	FP-PRO-4SLV3-UR-VI-RI	MACH 4 CARBON SL V3 UPRIGHT PROTECTOR		
28	FP-PRO-4SLV3-DT-XS-SM-VI-RI	MACH 4 CARBON SL V3 DOWNTUBE PROTECTOR (XS/SM/MD)		
28	FP-PRO-4SLV3-DT-MD-LG-XL-VI-RI	MACH 4 CARBON SL V3 DOWNTUBE PROTECTOR (LG/XL)		
29	PIVOT WB BOLTS V2	M5X0.8X18 ZINC PLATED STEEL WATER BOTTLE BOLTS		
30	FP-PRO-34MM-LL-V2-RI	34MM LOWER LINK PROTECTOR		
31	FRAME SIZE STICKER - XS/SM/MD/LG/XL	FRAME SIZE STICKER		

AXLES NUMBER	PART NUMBER	DESCRIPTION	TORQUE	*
I01	I48MM THROUGH AXLE V4	I48MM UDH REAR AXLE	15 NM (11 LB-FT)	G
I02	-	I2MM AXLE WASHER (INCLUDED W/ AXLE)		
<b>BIKE CARE</b>				
*	PRODUCT TYPE	RECOMMENDED PRODUCT		
G	GREASE	MOTOREX BIKE GREASE 2000		
L	THREAD LOCKER**	LOCTITE THREAD LOCKER #243 (OR EQUIVALENT)		
G/L	GREASE (BOLT SHAFT) / THREAD LOCKER (BOLT THREADS)	SEE ABOVE		
A	ANTI-SEIZE	MOTOREX COPPER PASTE		
R	RETAINING COMPOUND	LOCTITE RETAINING COMPOUND #620 (OR EQUIVALENT)		

\*\*THREADLOCKER SHOULD ALWAYS BE APPLIED TO THE CORRESPONDING FEMALE THREADS FOR THE BOLT SPECIFIED

