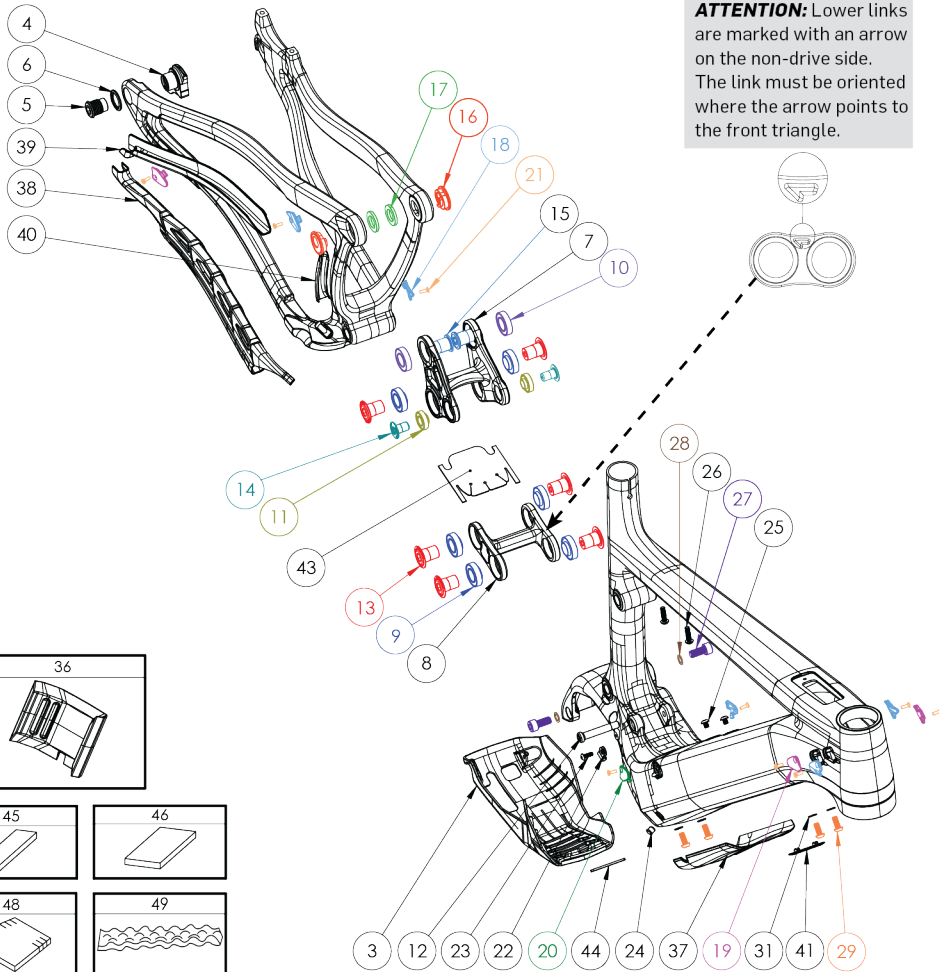
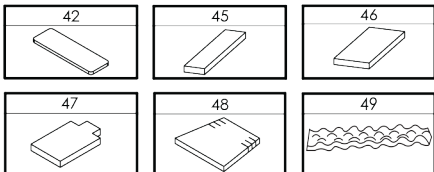
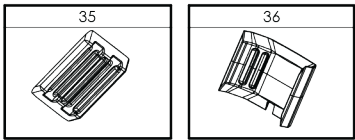
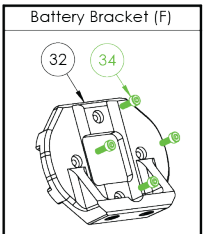
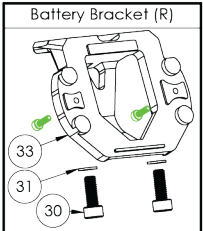


SHUTTLE AM



ATTENTION: Lower links are marked with an arrow on the non-drive side. The link must be oriented where the arrow points to the front triangle.



HARDWARE				
NUMBER	PART NUMBER	DESCRIPTION	TORQUE	*
3	FP-CVR-SKIDPLT-SHTV6-VI-RI	SHUTTLE V6 SKID PLATE		
4	FP-UDH-TA-12MM-BLK-VI-RI	UNIVERSAL REAR DERAILLEUR HANGER		
5	-	UNIVERSAL REAR DERAILLEUR HANGER BOLT	25 NM (18 LB-FT)	
6	-	UNIVERSAL REAR DERAILLEUR HANGER WASHER		
7	FP-LNK-UL-68MM-VI-RI	68MM UPPER LINK		
8	FP-LNK-LL-50MM-V3-RI	50MM OUT-TO-OUT LOWER LINK V3		
9	FP-BRG-6902-LLUMAXEEN	28MM 6902 EXTENDED MAX-E BEARING		R
10	FP-BRG-6902-LLUMAX	28MM 6902 STANDARD MAX BEARING		R
11	FP-BRG-6900-LLUMAXE	22MM 6900 EXT'D MAX-E BEARING		R
12	FP-BLT-M8*45.7-BLK-V2	M8 FRONT SHOCK BOLT FOR 30.1MM SHOCK SPACING	13 NM (10 LB-FT)	G / L
13	FP-BLT-M14*20-BLK-V2-R2	M14X20 LINK BOLT	35 NM (27 LB-FT)	L
14	FP-BLT-M10*16.5-BLK-VI	M10 TRUNNION MOUNT BOLT	13 NM (10 LB-FT)	L
15	FP-BLT-M14*20-BLK-V3-R2	M14X20 FLIP CHIP BOLT	35 NM (27 LB-FT)	L
16	FP-NUT-FLIPCHIP-4.6MM-VI	4.6MM FLIP CHIP		
17	FP-WSH-SPC-151*250*3W	M14X3MM FLIP CHIP SPACER		G
18	FP-CLM-MECH-FRM-VI	INTERNAL ROUTING CABLE CLAMP		
19	FP-CVR-MECH-FRM-V2	INTERNAL ROUTING HOLE COVER		
20	FP-CLM-MECH-FRM-V2	INTERNAL ROUTING CABLE CLAMP (MIRRORED)		
21	FP-SCW-FLT-M3*10-BLK	CABLE PORT CLAMP SCREW BLACK		
22	FP-CLM-ADEL-VI-RI	CABLE ROUTING ADEL CLAMP		
23	FP-SCW-BTN-M4*12-BLK-VI-RI	M4X12 ADEL CLAMP MOUNTING BOLT		
24	FP-PLG-DI2-7*8*5	7X8MM DI2 PLUG EXT'D		
25	FP-BLT-BTN-M5*6-VI-RI	M5X6 DT WATER BOTTLE BOLTS	3 NM (26 IN-LB)	L
26	PIVOT WB BOLTS V2	TOP TUBE TOOL BOLTS		
27	FP-SCW-SCK-M8*18-RI-BLK	M8X18 SOCKET HEAD SCREW BLACK	20 NM (14.75 LB-FT)	L
28	FP-WSH-81*120*1W-BLK	M8 WASHER BLACK		
29	FP-SCW-BTN-M6*14-BLK-VI-RI	M6X14 FRONT BRACKET/SKID PLATE BOLTS	6 NM / 1.5 NM	L
30	FP-SCW-SCK-M6*16-BLK-VI-RI	M6X16 REAR BRACKET BOLTS	6 NM (4.4 LB-FT)	L
31	FP-WSH-M6-BLK-VI-RI	M6 WASHER BLACK		
32	FP-MNT-FRNT-BATT-SLTV2-VI-RI	FRONT BATTERY BRACKET		
33	FP-MNT-REAR-BATT-SLTV2-VI-RI	REAR BATTERY BRACKET		
34	FP-BLT-SCK-M3*10-VI-RI	BATTERY MOUNTING BOLTS		
35	FP-BATT-PAD-60*70-VI-RI	UPPER BATTERY PAD		
36	FP-BATT-PAD-LWR-87.3MM-VI-R2	LOWER BATTERY PAD		
37	FP-PRO-SHTV6-DT-VI-RI	SHTLV6 DOWNTUBE PROTECTOR		
38	FP-PRO-SHTV6-CS-VI-RI	SHTLV6 CHAINSTAY PROTECTOR		
39	FP-PRO-SHTV6-SS-VI-RI	SHTLV6 SEATSTAY PROTECTOR		
40	FP-PRO-SHTV6-UR-VI-RI	SHTLV6 UPRIGHT PROTECTOR		
41	FP-PLG-BATT-MOUNT-VI-RI	BOSCH BATTERY MOUNT FRAME PLUG		
42	FP-PRO-BATT-CABLE-PAD-VI-RI	BOSCH BATTERY CABLE PAD		
43	FP-PRO-LL-50MM-V3-RI	LOWER LINK PROTECTOR		
44	FP-PAD-SKIDPLT-44*5*2-VI-RI	SKID PLATE RUBBER PAD		
45	FP-PRO-SOUND-10*35*185-VI-RI	HT FOAM BEHIND CABLE PORTS 35X185 (MD/LG/XL)		
46	FP-PRO-SOUND-10*60*160-VI-RI	TT AND DT FOAM 160X160 (SM/MD/LG/XL)		
47	FP-PRO-SOUND-10*55*90-VI-RI	BB/DT FOAM 55X90 TARGET (SM/MD/LG/XL)		
48	FP-PRO-SOUND-10*65*110-VI-RI	HT FOAM IN FRONT OF CABLE PORTS 80-110X95 (SM/MD/LG/XL)		
49	FP-PRO-SOUND-30*48*330-VI-RI	TT FOAM 30X48X330 (SM/MD/LG/XL)		

NOT PICTURED	PART NUMBER	DESCRIPTION	TORQUE	*
-	I57MM THROUGH AXLE V5	I57MM UDH REAR AXLE	15 NM (11 LB-FT)	G
-	-	I2MM AXLE WASHER (INCLUDED W/ AXLE)		G
-	FP-CVR-MECH-FRM-V4	INTERNAL ROUTING CABLE CAP (MIRRORED)		
-	FP-CLM-DUAL-FRM-VI	INTERNAL ROUTING DUAL CLAMP		
-	EB11.200.OOP	M6 DRIVE UNIT MOUNTING BOLTS	10 NM (7 LB-FT)	L
-	I270.014.085/I270.016.I19	CHAINRING LOCKRING AND O-RING	30 NM (22 LB-FT)	G

BIKE CARE			
*	PRODUCT TYPE	RECOMMENDED PRODUCT	
G	GREASE	MOTOREX BIKE GREASE 2000	
L	THREAD LOCKER**	LOCTITE THREAD LOCKER #243 (OR EQUIVALENT)	
G/L	GREASE (BOLT SHAFT) / THREAD LOCKER (BOLT THREADS)	SEE ABOVE	
A	ANTI-SEIZE	MOTOREX COPPER PASTE	
Y	LIGHT DUTY THREAD LOCKER	LOCTITE THREAD LOCKER #222 (OR EQUIVALENT)	
R	RETAINING COMPOUND	LOCTITE RETAINING COMPOUND #620 (OR EQUIVALENT)	

**THREADLOCKER SHOULD ALWAYS BE APPLIED TO THE CORRESPONDING FEMALE THREADS FOR THE BOLT SPECIFIED

