

Assembly Kit



- 1** Install adjuster screw in NDS dropout until index groove is past first tab



- 2** Install detent screw about two threads in by hand



- 3** Apply **ONE** drop of blue Loctite 242 or equivalent



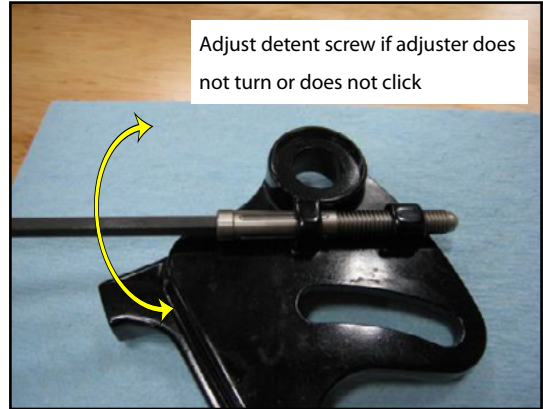
- 4** There should be no excess Loctite – only cover upper portion of threads



- 5 Install detent screw until it stops, then back off 1/4 turn



- 6 Check motion of adjuster screw. Screw should turn easily, and there should be a firm, audible "click" every 1/4 turn



- 7 Repeat steps 1-6 on DS dropout. Dropouts are ready to install on frame.



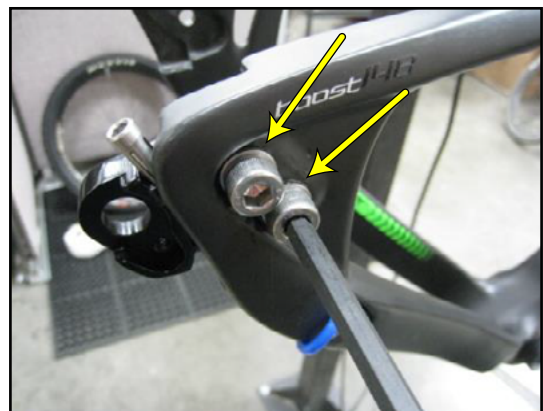
- 8 Grease all bolt threads



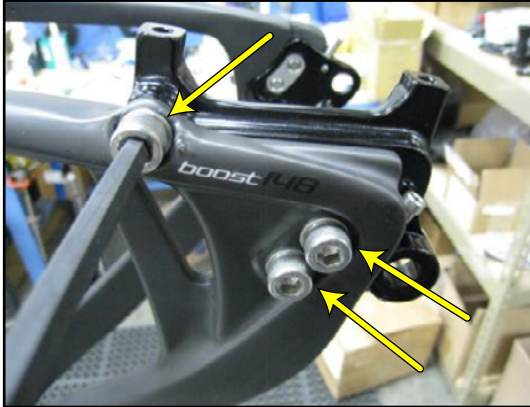
- 9 Install dropout lock nuts



- 10 Install DS dropout, but do not tighten bolts. **Make sure to install washers**



- 11** Install NDS dropout, but do not tighten bolts. **Make sure to install washers**



- 12** Adjust dropout until bottomed out in the forward position



- 13** Repeat for NDS dropout



When adjusting chain tension/wheel position, it is recommended to start in the full forward position, and count clicks out as a reference between DS and NDS adjustment.

Note that proper wheel alignment in frame may require a ± 1 click adjustment between the two sides.

- 14** Torque all **five** bolts to 15Nm



- 15** Install axle nut

